



Window Room Air Conditioner 51KWF

Technical specifications

Window Room Air-Conditioner	Unit	COOL ONLY	
		51KWE018HMF	51KWF024HMF
Unit Size	TR	1.5	2.0
Capacity at T1	BTU/h	18,000	23,000
	Watts	5,275	6,741
Capacity at T3	BTU/h	15,746	20,390
	Watts	4,615	5,976
Power Supply	V-Ph-Hz	220/240-1-50	
Total System Power Input at T1	Watts	1,950	2,500
Total System Power Input at T3	Watts	2,392	3,105
EER at T1	BTU/W-h	9.23	9.20
	BluW-h	6.58	6.57
EER at T3	CFM	401 / 303	495 / 400
	Net Weight	Kg	63
Dimension (W x D x H)	mm	660 x 428 x 680	660 x 428 x 780
Compressor Type		Rotary	
Refrigerant		R410A	
Max Outdoor Air Temperature Operation	°C	52	

1. T1 conditions: Indoor Air Temperatures 27°C (DB) / 19°C (WB) and Outdoor Air Temperatures 35°C (DB) / 24°C (WB)
 2. T3 conditions: Indoor Air Temperatures 29°C (DB) / 19°C (WB) and Outdoor Air Temperatures 46°C (DB) / 24°C (WB)
- Carrier reserves the right to change features and/ or specifications without notice and without incurring any liability.

Technical Specifications

Indoor Unit		Unit	COOL ONLY											
			42KDMT12N-716	42KDMT18N-718	42KDMT24N-718	42KDMT30N-718	42KDMT36N-718T	42KDHT42N-518T	42KDHT48N-518T	42KDHT60N-518T	42KDHT72N-518T			
Unit Size	TR	1.0	1.5	2.0	2.5	3.0	3.0	3.5	4.0	5.0	6.0			
Rating Capacity at T1	Cooling	BTU/h	13,400	18,600	25,000	35,700	36,700	41,300	48,350	58,920	71,500			
		KW	3.9	5.5	7.3	10.5	10.8	12.1	14.2	17.3	20.9			
Rating Capacity at T3	Cooling	BTU/h	11,600	16,000	22,000	31,400	33,500	35,800	45,000	51,325	62,000			
		Watts	3.4	4.7	6.5	9.2	9.8	10.5	13.2	15.0	18.2			
Power Supply	V-Ph-Hz	220/240-1-50												
Total System Power Input at T1	Watts	1,105	1,475	1,977	3,075	3,080	3,217	4,065	4,993	5,840				
Total System Power Input at T3	Watts	1,285	1,771	2,387	3,692	3,876	4,020	4,879	5,913	7,209				
EER at T1	Cooling	BluW-h	12.13	12.61	12.64	11.61	11.91	12.84	11.89	11.80	12.24			
		BluW-h	9.03	9.03	9.22	8.57	8.64	8.90	9.22	8.68	8.80			
EER at T3	W/W	3.56	3.69	3.71	3.40	3.49	3.76	3.49	3.46	3.59				
COP at T1	A	4.7 / 5.6	6.6 / 7.9	9.0 / 10.8	14.9 / 17.1	13.8 / 17.2	5.4 / 6.5	7.5 / 8.3	8.5 / 9.9	12.2 / 8.6				
Total System Current at T1 / T3	A													
Air Filter Type	Type	Anti-dust Aluminum Air Filter												
Air Flow Rate (High / Medium / Low Speed)	cfm	452/361/280 @ 25pa ESP	569/519/416 @ 25pa ESP	811/771/618 @ 25pa ESP	1160/1033/808 @ 37pa ESP	1169/1033/806 @ 37pa ESP	1376/1140/860 @ 50pa ESP	1737/1441/1270 @ 50pa ESP	1750/1507/1153 @ 50pa ESP	2355/1966/1805 @ 62pa ESP				
Sound Pressure (High / Medium / Low Speed)	dB(A)	37 / 35 / 33 @ 25pa ESP	40 / 38 / 36 @ 25pa ESP	46 / 42 / 38 @ 25pa ESP	43 / 42 / 40 @ 37pa ESP	44 / 42 / 41 @ 37pa ESP	44 / 42 / 40 @ 50pa ESP	53 / 50 / 48 @ 50pa ESP	54 / 51 / 45 @ 50pa ESP	55 / 52 / 48 @ 62pa ESP				
Net Weight	Kg	23	28	28	44.5	44.5	56	56	56	56	83			
Net Dimensions (W x D x H)	mm	920x635x210	920x635x270	1200x865x300									1470x795x510	
Pipe Connection Size	Liquid	1/4	1/4	3/8	3/8	3/8	3/8	3/8	3/8	3/8	1/2			
	Suction	1/2	1/2	5/8	3/4	3/4	7/8	7/8	7/8	7/8	7/8			
	Drain	25	25	25	25	25	25	25	25	25	41			
Outdoor Unit	Unit	COOL ONLY												
Power Supply	V-Ph-Hz	220/240-1-50												
Air Discharge	Type	Slide												
Compressor	Type	Rotary Tropical												
Refrigerant	Type	R410A												
Refrigerant Pipe (l/Max length)	Vertical + Horizontal	15	20	25	25	25	30	30	35	40				
	Vertical (CU & U)	6	10	10	15	15	15	15	15	15				
Recommended Wire Size No. of Wires for Power Supply to CDU **	mm ² / qty	4 mm ² / (2 + 1 Earth)		6 mm ² / (2 + 1 Earth)		0.2 mm ² / (3 + 1 Earth)						4 mm ² / (4 + 1 Earth)		
Recommended Wire Size No. of Wires for Power Supply to FCU	mm ² / qty	---		1 mm ² / (2 + 1 Earth)		1 mm ² / (2 + 1 Earth)						1 mm ² / (2 + 1 Earth)		
Recommended Wire Size No. of Wires for Control from FCU to CDU	mm	1 mm ² / (3 + 1 Earth)												
Dimensions (W x D x H)	mm	770x 300 x 555	945 x 320 x 700	945 x 335 x 810	710 x 710 x 843	710 x 710 x 843	740x 740x 843	740x 740x 843	740x 740x 843	740x 740x 843				
Net Weight	Kg.	37	48.5	60	70.5	84.5	80	80	102	102				
Max Outdoor Air Temperature Operation	°C	52												

1. T1 conditions: Indoor Air Temperatures 27°C (DB) / 19°C (WB) and Outdoor Air Temperatures 35°C (DB) / 24°C (WB), in compliance with UAE.S 5010: 2014 & UAE.S ISO 13253:2011

2. T3 conditions: Indoor Air Temperatures 29°C (DB) / 19°C (WB) and Outdoor Air Temperatures 46°C (DB) / 24°C (WB), in compliance with UAE.S 5010: 2014 & UAE.S ISO 13253:2011

** Recommended wire sizes are for reference & guidance only, all field wires should comply with National and International Electrical Codes Carrier resses as the right to change features and/or specifications without notice and without incurring any liability





Free Standing Unit 42SD/SM

Technical specifications

Indoor Unit	Unit	COOL ONLY			
		42SM5CKA	42SD6CK	42SD7CK	
Unit Size	TR	3.0	4.0	5.0	
Capacity at T1	BTU/h	35,000	46,000	56,000	
	Watts	10,258	13,482	16,413	
	BTU/h	29,600	40,000	48,000	
Capacity at T3	Watts	8,675	11,723	14,068	
	V-Ph-Hz	220/240-1-50	380/415-3-50		
Power Supply					
Total System Power Input (OU + IU) at T1	Watts	3,957	4,150	4,570	
Total System Power Input (OU + IU) at T3	Watts	4,405	5,150	5,770	
EER at T1	Cooling	8.58	10.37	10.25	
	Blu-W-h	6.81	7.35	7.33	
EER at T3	Blu-W-h				
Air Filter Type			1 step/ Dust Collector		
Air Flow Rate (High / Medium / Low Speed)	CFM	780 / - / -	1059 / - / -	1872 / - / -	
Indoor Sound Pressure Level (High/ Medium / Low Speed)	dBa	54.5 / - / 51.7	53 / 50 / 47	59 / 57 / 54	
Net Weight	Kg	46	70	88	
Dimensions (W x D x H)	mm	500 x 310 x 1800	580 x 1750 x 400	740 x 1800 x 440	
	Liquid	inch	3.8"	3.9"	3.9"
	Suction	inch	5.8"	3.4"	3.4"
Pipe Connection Size	Drain	inch	5.8"	3.4"	3.4"
Outdoor Unit	Unit	COOL ONLY			
Power Supply	V-Ph-Hz	38SM5CKA	38SD6CK	38SD7CK	
Compressor Type		220/240-1-50		380/415-3-50	
Refrigerant		Reciprocating		Scroll	
			R22		
Refrigerant Pipe (Max Length)	Vertical + Horizontal	mts	20	20	20
	Vertical (OU & IU)	mts	10	10	10
Recommended Wire Size/No. of Wires for Power Supply to Condensing Unit *			4.0 / 2 + 1 Earth	4.0 / 4 + 1 Earth	
Recommended Wire Size/No. of Wires for Control from FCU to Condensing Unit *	mm ² / qty		1.0 / 3 + 1 Earth		
Dimensions (W x D x H)	mm	900 x 320 x 820		1130 x 945 x 433	
Net Weight	Kg	70	96	100	
Max Outdoor Air Temperature Operation	°C		52		

1. T1 conditions: Indoor Air Temperatures 27°C (DB) / 19°C (WB) and Outdoor Air Temperatures 35°C (DB) / 24°C (WB)

2. T3 conditions: Indoor Air Temperatures 29°C (DB) / 19°C (WB) and Outdoor Air Temperatures 46°C (DB) / 24°C (WB)

* Recommended wire sizes are for reference & guidance only, all field wires should comply with National and International Electrical Codes

Carrier reserves the right to change features and/ or specifications without notice and without incurring any liability

AIR CONDITIONING SOLUTIONS



United Technologies

Packaged Rooftop Unit 50ZP-50TCM-50TJM



With non-ozone depleting refrigerant (R-410A)



DesertMaster™

Technical specifications

Indoor Unit	Unit	COOL ONLY				
		42KTD018HSF	42KTD024HSF	42KTD036HSF	42KTD048HSF	
Unit Size	TR	1.5	2.0	3.0	4.0	
Capacity at T1	BTU/h	17,500	24,000	36,000	47,500	
	Watts	5,129	7,034	10,551	13,931	
Capacity at T3	BTU/h	14,670	20,670	33,200	40,060	
	Watts	4,300	6,058	9,730	11,741	
Power Supply	V-Ph-Hz	220/240-1-50				
Total System Power Input (OU + IU) at T1	Watts	1,470	1,950	3,200	3,950	
Total System Power Input (OU + IU) at T3	Watts	1,750	2,350	3,950	4,900	
EER at T1	Btu/w-h	11.90	12.31	11.25	12.03	
EER at T3	Btu/w-h	8.38	8.80	8.41	8.35	
Air Filter type		Nylon fibre filter				
Air Flow Rate (High/ Medium/ Low Speed)	CFM	642 / 549 / 473	787 / 685 / 555	1244 / 1075 / 875	1328 / 1170 / 1014	
Indoor Sound pressure Level (High/ Medium/ Low Speed)	dBa	42 / 39 / 37	46 / 43 / 38	56 / 52 / 48	59 / 56 / 53	
Net Weight - Body	Kg	24		29		
Net Weight - Panel	Kg	5				
Dimensions - Body (W x D x H)	mm	840 x 840 x 245		840 x 840 x 287		
Dimensions - Panel (W x D x H)	mm	950 x 950 x 55				
Pipe Connection Size	Liquid	1/4"	3/8"	3/8"	3/8"	
	Suction	1/2"	5/8"	3/4"	3/4"	
	Drain	3/4"	3/4"	3/4"	3/4"	
Outdoor Unit	Unit	COOL ONLY				
Power Supply	V-Ph-Hz	38KTD018HSF	38KTD024HSF	38KTD036HSF	38KTD048HTF	
Compressor Type		Rotary		Scroll		
Refrigerant		R410A				
Refrigerant Pipe (Max Length)	Vertical + Horizontal	mts	25	25	30	30
	Vertical (OU & IU)	mts	10	10	15	15
Recommended Wire Size/No. of Wires for Power Supply to Condensing Unit *	mm ² / qty	2.5 / 2 + 1 Earth (OU)		4.0 / 2 + 1 Earth (OU) / 1.0 / 2 + 1 Earth (IU)	2.5 / 4 + 1 Earth (OU) / 1.0 / 2 + 1 Earth (IU)	
Recommended Wire Size/No. of Wires for Control from FCU to Condensing Unit *		1.0 / 3 + 1 Earth				
Dimensions (W x D x H)	mm	845 x 320 x 700	945 x 395 x 810	990 x 345 x 965	938 x 392 x 1369	
Net Weight	Kg	48.5	61	90	106	
Max Outdoor Air Temperature Operation	°C	52				

1. T1 conditions: Indoor Air Temperatures 27°C (DB) / 19°C (WB) and Outdoor Air Temperatures 35°C (DB) / 24°C (WB)

2. T3 conditions: Indoor Air Temperatures 29°C (DB) / 19°C (WB) and Outdoor Air Temperatures 46°C (DB) / 24°C (WB)

* Recommended wire sizes are for reference & guidance only, all field wires should comply with National and International Electrical Codes
Carrier reserves the right to change features and/ or specifications without notice and without incurring any liability.

Technical specifications

Indoor Unit		Unit	COOL ONLY				
			42KHFO12H	42KHFO18H	42KHFO24H	42KHFO30H	
Unit Size	TR	1.0	1.5	2.0	2.5		
Capacity at T1	BTU/h	12,500	18,000	24,000	30,000		
	Watts	3,664	5,275	7,034	8,792		
	BTU/h	10,850	16,500	21,140	28,260		
Capacity at T3	Watts	3,180	4,836	6,196	8,283		
Power Supply		V-Ph-Hz	220-240/1 - 50				
Total System Power Input (OU + IU) at T1		Watts	1,100	1,700	2,250	2,900	
Total System Power Input (OU + IU) at T3		Watts	1,300	2,000	2,650	3,500	
EER at T1	Cooling	Blu/W-h	11.36	10.59	10.67	10.34	
EER at T3		Blu/W-h	8.34	8.25	7.97	8.07	
Air Filter Type			Washable air filter				
Air Flow Rate (High/ Medium/ Low Speed)		CFM	600 / 530 / 400	830 / 710 / 620	1120 / 980 / 800	1360 / 1190 / 950	
Indoor Sound Pressure Level (High/ Medium/ Low Speed)		dBa	43 / 38 / 35	44 / 40 / 37	48 / 45 / 41	51 / 48 / 43	
Net Weight		kg	8	10	12.5	20.5	
Dimensions (W x D x H)		mm	800 x 188 x 275	940 x 205 x 275	1045 x 235 x 315	1250 x 285 x 360	
			Liquid	1/4"	1/4"	3/8"	3/8"
			Suction	1/2"	1/2"	5/8"	3/4"
Pipe Connection Size		inch	5/8"	5/8"	5/8"	5/8"	
			Drain				
Outdoor Unit		Unit	COOL ONLY				
Power Supply		V-Ph-Hz	38KHF012H	38KHF018H	38KHF024H	38KHF030H	
Compressor Type			220/240-1-50 ROTARY				
Refrigerant			R410A				
Refrigerant Pipe (Max Length)		Vertical + Horizontal	20	25	25	25	
		Vertical (OU & IU)	8	10	10	10	
Recommended Wire Size/No. of Wires for Power Supply to Condensing Unit*		mm ² /qt/	1.5 / 2 + 1 Earth 2.5 / 2 + 1 Earth				
Recommended Wire Size/No. of Wires for Control from FCU to Condensing Unit*			1.5 / 2 + 1 Earth 2.5 / 3 + 1 Earth				
Dimensions (W x D x H)		mm	780 x 250 x 540		845 x 320 x 700		
Net Weight		kg	28	46	60	69.5	
Max Outdoor Air Temperature Operation		°C	52				

1. T1 conditions: Indoor Air Temperatures 27°C (DB) / 19°C (WB) and Outdoor Air Temperatures 35°C (DB) / 24°C (WB)

2. T3 conditions: Indoor Air Temperatures 29°C (DB) / 19°C (WB) and Outdoor Air Temperatures 46°C (DB) / 24°C (WB)

* Recommended wire sizes are for reference & guidance only, all field wires should comply with National and International Electrical Codes

Carrier reserves the right to change features and/or specifications without notice and without incurring any liability

High Wall Unit 42KHFT



Technical specifications

Indoor Unit	Unit	COOL ONLY		
		42KHFT12-708	42KHFT18-708	42KHFT24-708
Unit Size	TR	1.0	1.5	2.0
Capacity at T1	BTU/h	11,000	17,200	22,600
	Watts	3,224	5,041	6,624
Capacity at T3	BTU/h	9,600	16,500	20,500
	Watts	2,814	4,836	6,008
Power Supply	V-Ph-Hz	220/240-1-50		
Total System Power Input (OU + IU) at T1	Watts	1,134	1,683	2,314
Total System Power Input (OU + IU) at T3	Watts	1,290	2,036	2,790
EER at T1	BTU/W-h	9.70	10.22	9.77
	BTU/W-h	7.44	8.11	7.35
EER at T3	BTU/W-h	Anti-dust Air Filters + Formaldehyde Air Filter		
Air Filter Type	CFM	245 / 307 / 358	343 / 418 / 505	367 / 476 / 543
Air Flow Rate (High/ Medium/ Low Speed)	dBa	34 / 38 / 41	37 / 41 / 44	39 / 45 / 48
Indoor Sound Pressure Level (High/ Medium/ Low Speed)	kg	8	10	13
Net Weight	mm	800 x 275 x 188	940 x 275 x 205	1045 x 315 x 235
Dimensions (W x D x H)	Liquid	inch	3/8"	1/2"
	Suction	inch	1/4"	1/4"
	Drain	inch	5/8"	5/8"
Pipe Connection Size				
Outdoor Unit	Unit	COOL ONLY		
	Power Supply	V-Ph-Hz	220/240-1-50	
	Compressor Type		Rotary	
Refrigerant			R22	
Refrigerant Pipe (Max Length)	Vertical + Horizontal	mts	10	15
	Vertical (OU & IU)	mts	4	8
Recommended Wire Size/No. of Wires for Power Supply to Indoor Unit *	mm ² /Qty	3 / 2 + 1 Earth	4 / 2 + 1 Earth	-
Recommended Wire Size/No. of Wires for Power Supply to Outdoor Unit *		-	-	4 / 2 + 1 Earth
Recommended Wire Size/No. of Wires for Control Between Outdoor and Indoor Units *		3 / 2 + 1 Earth	4 / 2 + 1 Earth	1 / 3 + 1 Earth
Dimensions (W x D x H)	mm	780 x 540 x 250	760 x 590 x 285	845 x 700 x 320
Net Weight	Kg	29	42	51
Max Outdoor Air Temperature Operation	°C	52		

1. T1 conditions: Indoor Air Temperatures 27°C (DB) / 19°C (WB) and Outdoor Air Temperatures 35°C (DB) / 24°C (WB)

2. T3 conditions: Indoor Air Temperatures 29°C (DB) / 19 °C (WB) and Outdoor Air Temperatures 46°C (DB) / 24°C (WB)

* Recommended wire sizes are for reference & guidance only, all field wires should comply with National and International Electrical Codes

Carrier reserves the right to change features and/ or specifications without notice and without incurring any liability



High Wall Unit 42KHL/42XPPL

Technical specifications

Indoor Unit	Unit	COOL ONLY			
		42KHL0187P	42KHL0247P	42XPLO30C7P	42XPLO367P
Unit Size	TR	1.5	2.0	2.5	3.0
Capacity at T1	BTU/h	18,000	22,000	29,000	33,500
	Watts	5,275	6,448	8,499	9,818
	BTU/h	15,500	18,500	25,000	28,500
Capacity at T3	Watts	4,543	5,422	7,327	8,353
Power Supply	V-Ph-Hz	220/240-1-50			
Total System Power Input (OU + IU) at T1	Watts	1,560	1,940	2,500	2,980
Total System Power Input (OU + IU) at T3	Watts	1,865	2,225	3,000	3,590
EER at T1	BTU/W-h	11.54	11.34	11.60	11.24
EER at T3	BTU/W-h	8.31	8.31	8.33	7.94
Air Filter Type		5 Steps/ Dust Collector + Carbon + Triple Filter and Ionizer		6 Steps/ Dust Collector + Carbon Photo Catalytic + Triple Filter and Ionizer	
Air Flow Rate (High/ Medium/ Low Speed)	CFM	584 / 532 / 473		850 / 770 / 700	870 / 800 / 730
Indoor Sound Pressure Level (High/ Medium/ Low Speed)	dBa	45 / 44 / 41		49.2 / 47.0 / 44.9	50.8 49.2 / 46.5
Net Weight	Kg	14		23	23
Dimensions (W x D x H)	mm	1080 x 231 x 295		1460 x 277 x 340	
Pipe Connection Size	Liquid	inch		1/4	
	Suction	inch		5/8	
	Drain	inch		3/4	
Outdoor Unit	Unit	COOL ONLY			
		38KHL0187	38KHL0247	38XPLO30C7	38XPLO36C7
Power Supply	V-Ph-Hz	220/240-1-50		Scroll	
Compressor Type		Rotary		R410A	
Refrigerant				1/8	
Pipe Connection Size	Liquid	inch		5/8	
	Suction	inch		5/8	
	Vertical + Horizontal	mts		40	
	Vertical (OU & IU)	mts		15	
Recommended Wire Size/No. of Wires for Power Supply to Condensing Unit *	mm ² / qty	2.5 / 2 + 1 Earth		4.0 / 2 + 1 Earth	
Recommended Wire Size/No. of Wires for Power Supply FCU to Condensing Unit *	mm	900 x 320 x 690		900 x 320 x 820	
Dimensions (W x D x H)	Kg	49	52	58	70
Net Weight	°C	52		52	
Max Outdoor Air Temperature Operation					

Notes:

1. T1 conditions: Indoor Air Temperatures 27°C (DB) / 19°C (WB) and Outdoor Air Temperatures 35°C (DB) / 24°C (WB)
2. T3 conditions: Indoor Air Temperatures 29°C (DB) / 19°C (WB) and Outdoor Air Temperatures 46°C (DB) / 24°C (WB)

* Recommended wire sizes are for reference & guidance only, all field wires should comply with National and International Electrical Codes
 Carrier reserves the right to change features and/ or specifications without notice and without incurring any liability





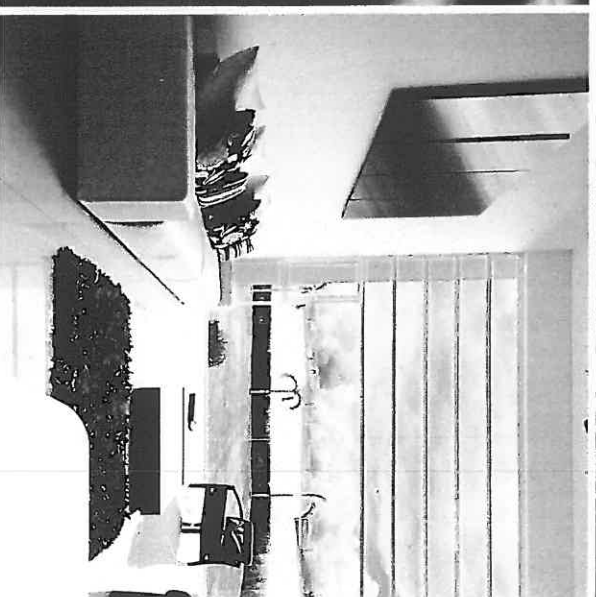
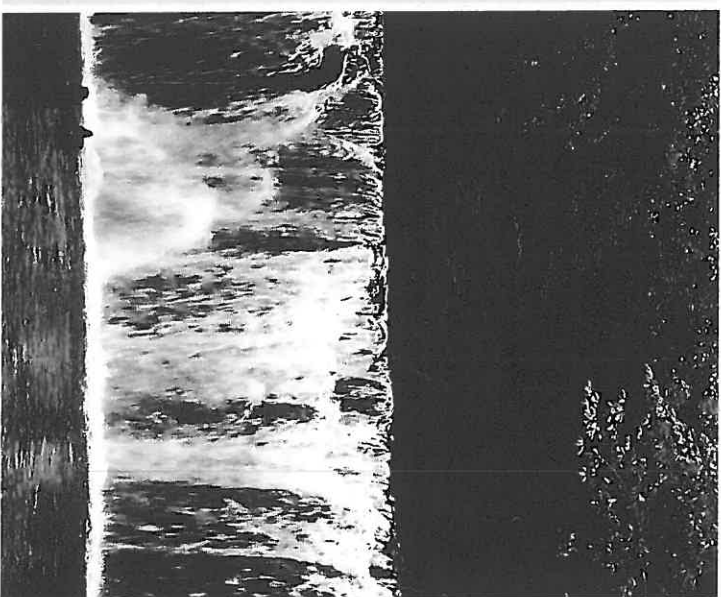
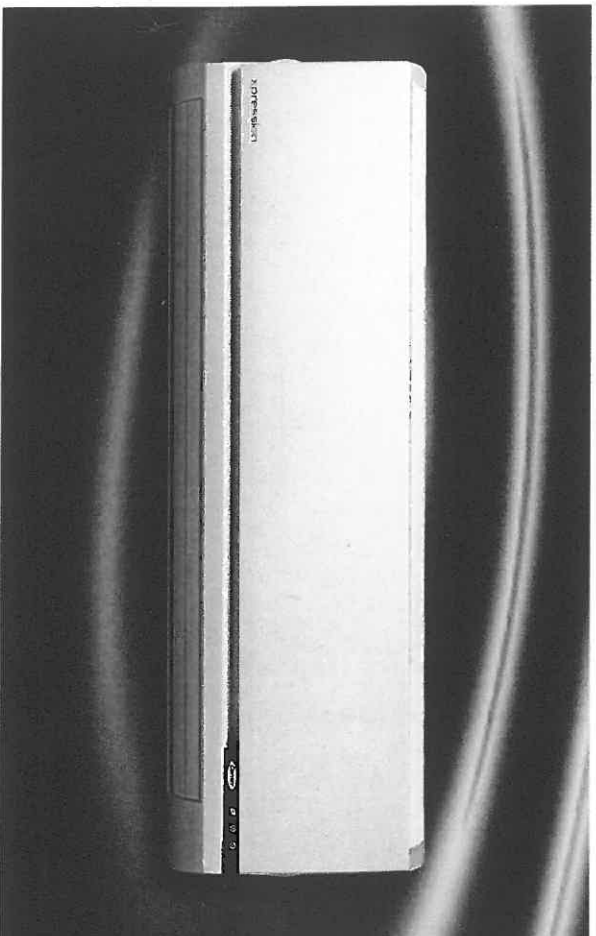
AIR CONDITIONING SOLUTIONS

High Wall Unit 42KH / 42XP

Technology at its best

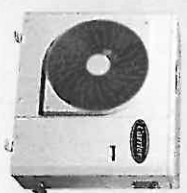
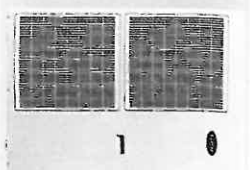
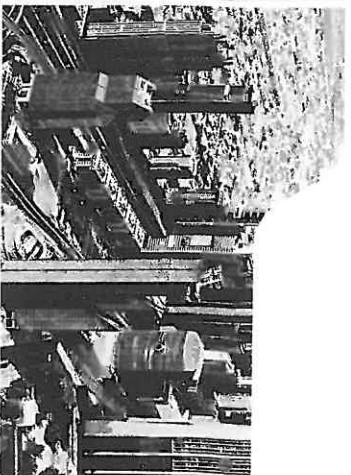
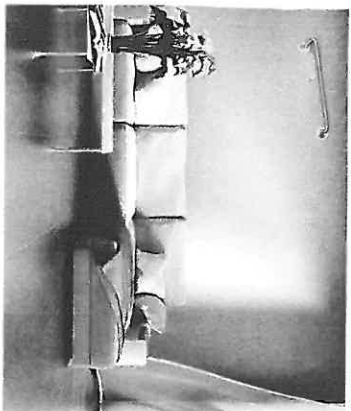
Features

- Four way air distribution system
- Auto restart function
- Low noise level
- Turbo cooling
- Sleep mode



علامة الجودة الإماراتية
Emirates Quality Mark

xpression



Technical specifications

Korea

Indoor Unit	Unit	COOL ONLY				
		42KH0207K	42KHD0247K	42XP090C7A	42XP100C7A	
Unit Size	TR	1.5	2.0	2.5	3.0	
Capacity at T1	BTU/h	20,000	23,500	30,000	36,000	
	Watts	5,862	6,887	8,792	10,551	
	BTU/h	17,500	20,500	26,000	30,200	
Capacity at T3	Watts	5,129	6,008	7,620	8,851	
Power Supply	V-Ph-Hz	220/240-1-50				
Total System Power Input (OU + IU) at T1	Watts	1,871	2,536	3,310	3,913	
Total System Power Input (OU + IU) at T3	Watts	2,078	2,813	3,826	4,354	
Cooling	BTU/h	10.43	9.06	9.09	8.76	
	BTU/W-h	8.16	7.19	6.81	6.90	
	BTU/W-h	1 step / Dust Collector				
Air Flow Rate (High/ Medium/ Low Speed)	CFM	537 / 472 / 413	570 / 537 / 472	730 / 630 / 530	830 / 730 / 630	
Indoor Sound Pressure Level (High/ Medium/ Low Speed)	dB(A)	44 / 42 / 40	46 / 44 / 42	47 / 44 / 41	49 / 47 / 44	
Net Weight	Kg	14		23		
Dimensions (W' x D x H)	mm	1080 x 200 x 295		1460 x 240 x 340		
		Liquid	3/8"	3/8"	1/4"	1/4"
		Suction	5/8"	5/8"	5/8"	3/4"
Pipe Connection Size	inch	5/8"		3/4"		
		Drain				
Outdoor Unit	Unit	COOL ONLY				
Power Supply	V/Ph/Hz	220/240-1-50				
Compressor Type		Reciprocating		Rotary	Reciprocating	
Refrigerant		R22				
Refrigerant Pipe (Max Length)	Vertical + Horizontal	mts	15	15	20	
	Vertical (OU & IU)	mts	10	10	10	
Recommended Wire Size/No. of Wires for Power Supply to Condensing Unit*	mm ² / qty	2.5 / 2 + 1 Earth		4.0 / 2 + 1 Earth		
Recommended Wire Size/No. of Wires for Control from FCU to Condensing Unit*	mm	900 x 320 x 690		1.0 / 3 + 1 Earth		
Dimensions (W' x D x H)	mm					
Net Weight	Kg	58	58	61	81	
Max Outdoor Air Temperature Operation	°C	52				

1. T1 conditions: Indoor Air Temperatures 27°C (DB) / 19°C (WB) and Outdoor Air Temperatures 35°C (DB) / 24°C (WB)

2. T3 conditions: Indoor Air Temperatures 29°C (DB) / 19°C (WB) and Outdoor Air Temperatures 46°C (DB) / 24°C (WB)

* Recommended wire sizes are for reference & guidance only, all field wires should comply with National and International Electrical Codes

Carrier reserves the right to change features and/ or specifications without notice and without incurring any liability.

